

MONTHLY MEMBERSHIP PROGRESS REPORT

LOCATION ENGLAND

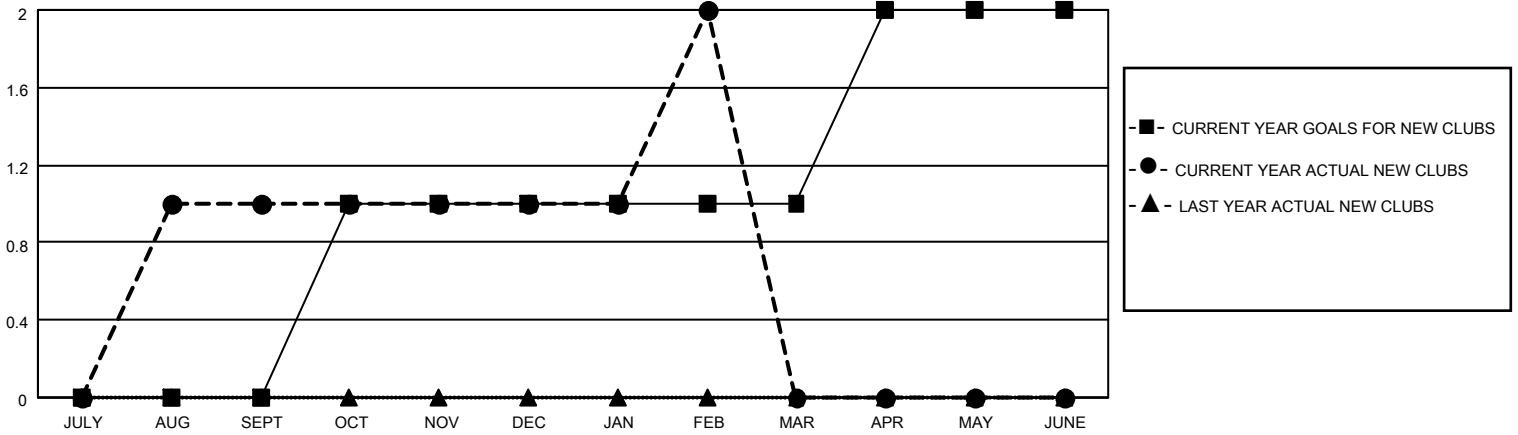
District 105CW

Results as of: 2/28/2021

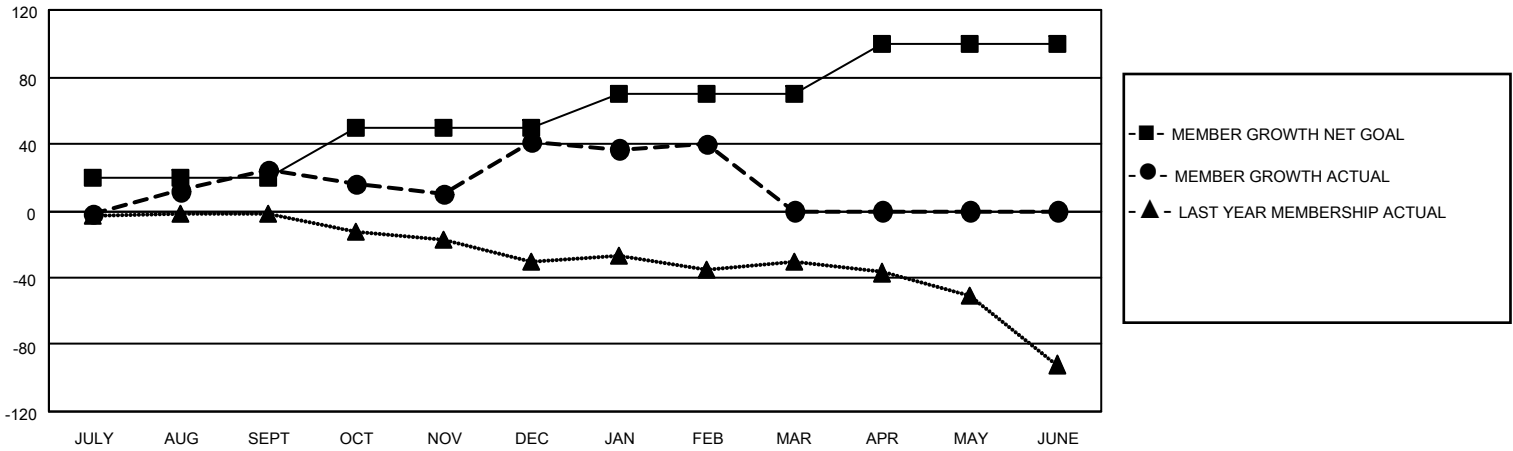
Clubs			
RESULTS FOR 2020-2021			
QUARTER	NEW CLUB GOAL	NEW CLUBS	DROPPED CLUBS
JULY/AUG/SEPT	0	1	1
OCT/NOV/DEC	1	0	0
JAN/FEB/MAR	0	1	0
APR/MAY/JUNE	1	0	0

Members			
RESULTS FOR 2020-2021			
QUARTER	MEMBER GROWTH NET GOAL	MEMBER GROWTH ACTUAL	DROPPED MEMBERS ACTUAL (including transfers)
JULY/AUG/SEPT	20	72	42
OCT/NOV/DEC	30	73	49
JAN/FEB/MAR	20	39	38
APR/MAY/JUNE	30	0	0

GOALS AND ACTUAL NEW CLUBS CUMULATIVE



GOALS AND ACTUAL MEMBERS CUMULATIVE



DROPPED CLUBS: 1	27 CLUBS OF 93 ADDED 1 OR MORE NEW MEMBERS	<u>GENDER DISTRIBUTION</u> MALE 1,220 (72.15%) FEMALE 471 (27.85%)
<u>DROPPED MEMBERS</u> DECEASED 13 CLUB CANCELLED 0 OTHER 116 <hr/> TOTAL 129	CLICK HERE FOR CUMULATIVE MEMBERSHIP DATA	TOTAL FAMILY UNIT MEMBERS 218 FAMILY MEMBERS PAYING HALF DUES 110